

Optimising Library Resources Through Collaboration

Presenter

M.Ed Nguyen Thi Kim Uyen

RMIT University Vietnam

Table of contents

HOW COLLABORATION OPTIMISES RESOURCES

IDENTIFYING RESOURCE SHORTCOMINGS

EFFECTIVE COLLABORATION MODELS

CHALLENGES & SOLUTIONS

**How collaboration
optimises resources**

**Collaboration
=
Saving**

Shortcomings

and Potential Solutions

Lack of Human Resources

Lack of Modern Technology

Lack of Space

Lack of Visibility and
Communication Strategies

Identifying Shortcomings and Potential Solutions

Lack of Human Resources

Challenges

- Too much work, not enough staff or expertise
- Tasks like cataloging, digitizing, and tech upgrading are demanding

Suggestions

- Knowledge sharing networks
- Staff exchange
- Joint projects



Effective Collaboration Models



Knowledge Sharing Networks



Joint Projects

Identifying Shortcomings and Potential Solutions

Lack of Modern Technology

Challenges

- Limited budgets or low prioritization for upgrading library systems, digital tools, and infrastructure.
- Limited Staff Capacity or Digital Skills

Suggestions

- Collaborate with Local Universities or Tech Schools
- Lending & borrowing resources
- Run peer-to-peer training to boost internal capacity in using current systems more effectively.

Effective Collaboration Models

Document Delivery Services

Home / Library / Borrowing and collections / Get resources from other libraries / Document Delivery Services


Access items from our off-site storage and resources held outside of RMIT University Library collections.

How to request document delivery

- 1. Log in to LibrarySearch
- 2. Look for the Document Delivery link in the LibrarySearch top menu
- 3. Fill out the request form with as much detail as you have available.

[Log in to request document delivery >](#)

[Back to Library](#)[LibrarySearch Help](#)

NEW SEARCHDATABASESDOCUMENT DELIVERYDIGITAL RESOURCES

Need help?

Make the most of LibrarySearch



RMIT Document Delivery Service
Share the facilities and scan the documents

Identifying Shortcomings and Potential Solutions

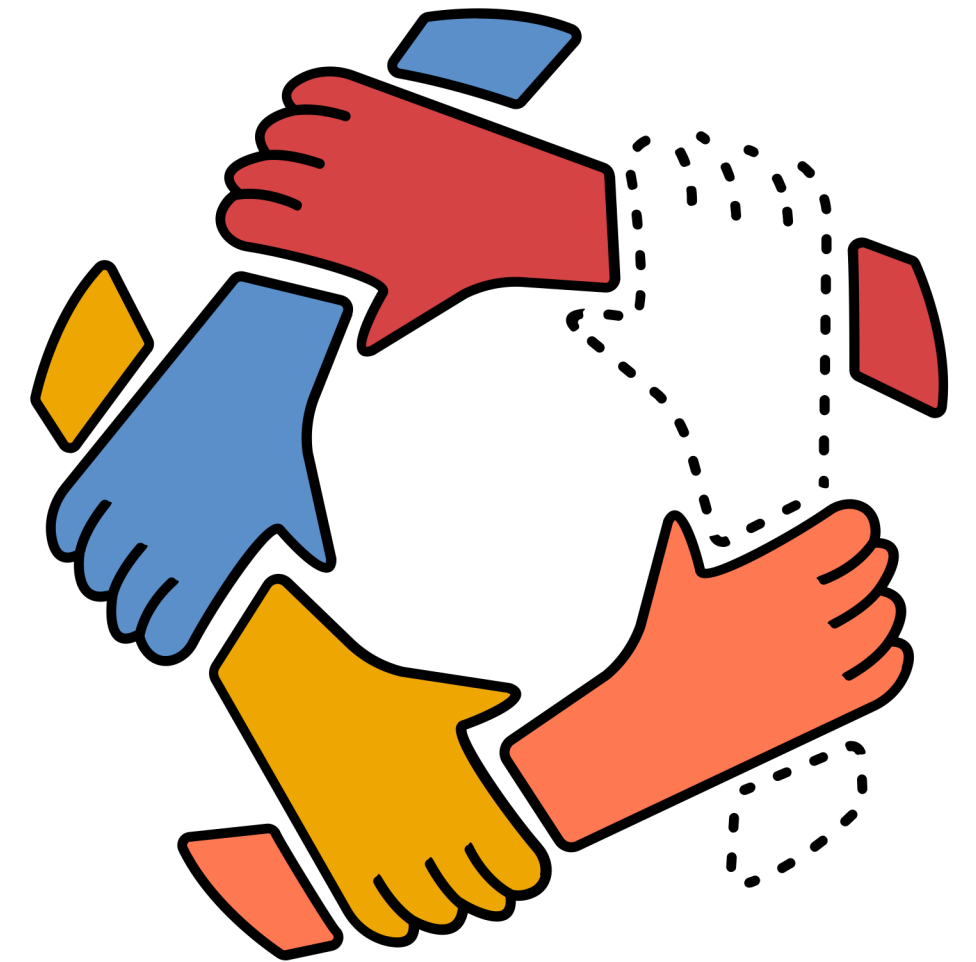
Lack of Space

Challenges

- Cannot find suitable places for the activities
- Growing User Demand vs. Static Facilities

Suggestions

- Collaborate with nearby community centers, co-working spaces, or partner organizations to provide additional study areas or tech zones for library users.



Effective Collaboration Models

According to American Library Association

Joint-Use Libraries: Home

Basic information about joint-use libraries, with bibliographies.

Search this Guide

Search

Home

General Articles

Combined Public and School Libraries

Combined Public and Academic Libraries

Joint-Use Libraries



Joint use libraries, also known as **combined libraries**, **dual use libraries**, **integrated libraries**, **co-managed libraries**, or **cooperative libraries**, are a special form of library cooperation. Joint-use libraries are those where two separate library service providers use the same building to serve distinct clienteles. Such libraries are most often public libraries combined with school library media centers or public libraries combined with academic libraries, but other types exist.

This guide provides resources on joint-use libraries, including a bibliography and online resources as well as resources on the most common joint-use library types - public libraries combined with school libraries and public libraries combined with academic libraries.

Tidewater Joint Use Library

December 12, 2014



Photo by Jeff Goldberg/Esto Photography
Tidewater Joint Use Library, Virginia Beach, Va.

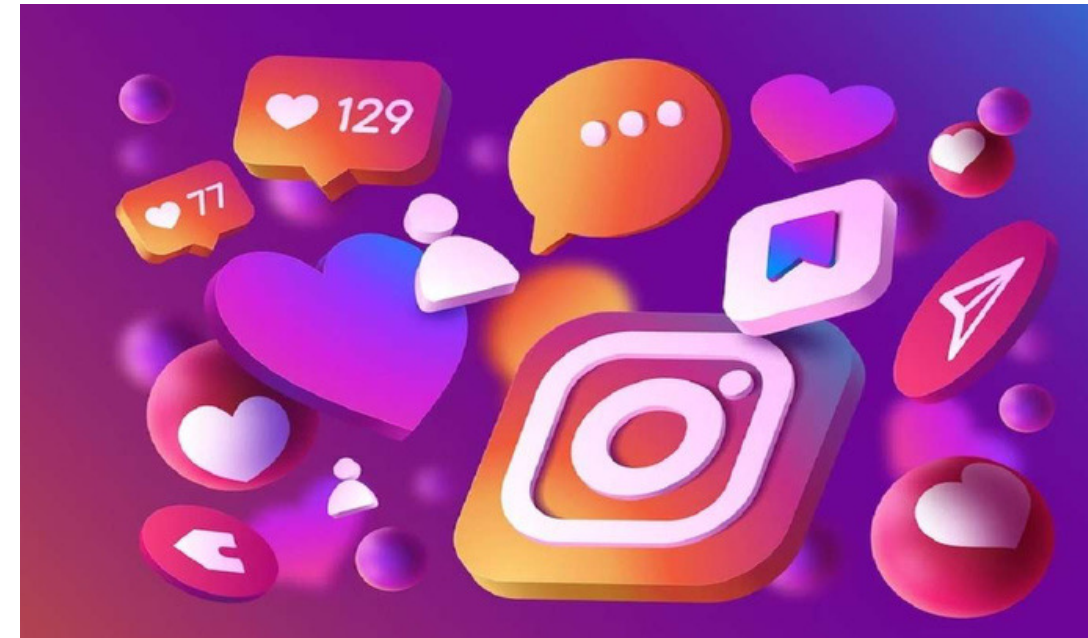
Lack of Visibility and Communication Strategies

Challenges

- **Low awareness** of library services among users
- **Limited staff capacity** for content creation
- Each library runs its **individual social media**, leading to overlapping content and narrow audience.

Suggestions

- Involve **student ambassadors or volunteers** from other universities to support communication and storytelling efforts
- Set up regular **cross-team updates** and shared calendars



Effective collaboration models

Cross-University Shared Marketing

Newsletter

Sustaining Long-Term Collaboration can be tough due to shifting priorities and communication issues, leading to disengagement.

Difficulties in execution



Leadership as a Solution

Strong leadership can address these challenges by promoting open communication, setting clear goals, and fostering a shared vision. Regular check-ins and support help keep teams engaged and collaboration strong.





Thank you