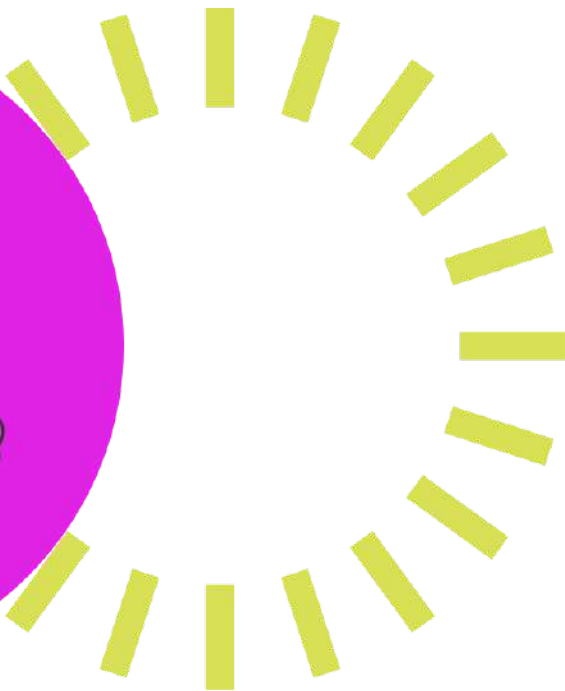
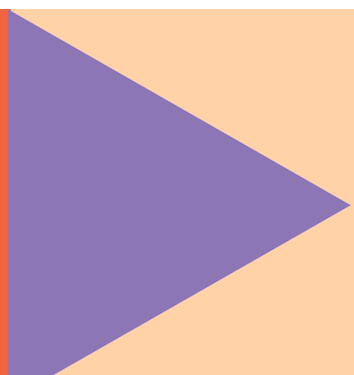


RMIT-KOTO

DREAM RIDE



Riders Handbook



02

Welcome to the RMIT-KOTO Dream Ride!

03

Event Day Agenda

04

The Route

09

Contacts



**TABLE OF
CONTENTS**



WELCOME TO THE RMIT-KOTO DREAM RIDE

Ride to make a difference

Growing from 30 riders in 2001 to over 200 riders in 2019, the KOTO Dream Ride has raised over US\$250,000 since its inception.

The Dream Ride this year of KOTO's Class 43 will be the most exciting journey yet. With great collaboration with RMIT, the ride is leading to our forever home - the KOTO training center in Phat Tich, Bac Ninh. The event is set to raise \$50,000 to fund our Class 43, who will be trained with valuable skills and supported to enter sustainable employment. They hail from backgrounds of crime, poverty, violence and/or have been orphaned.

Join us to create memorable impact not only with their personal development, but also create a ripple effect throughout the community that will go on for years!

Thank you for taking part in the RMIT-KOTO Dream Ride! Today is all about having fun and enjoying the beautiful countryside around Hanoi. Here is some helpful information to make sure you have the best ride possible!

EVENT AGENDA



Time	Activities	Venue
7:00	Riders checking in	UNIS
7:45	Welcome speeches by KOTO and RMIT	UNIS
8:00	Start the Dream Ride	UNIS
9:00	Break	Rest stop 1
10:15	Break & snack	Giong Temple
10:45	<ul style="list-style-type: none"> • Full riders: Continue the ride to KOTO Dream School • Half riders: Go to KOTO Dream School by bus 	
11:00	Finish the ride	KOTO Dream School
11:00 - 13:00	Entertainment, prizes announcement & Lunch	KOTO Dream School
13:00	Wrap up and back to Hanoi	
14:30	Bus drops off at UNIS and Van Mieu	KOTO Van Mieu restaurant

DREAM RIDE ROUTE



Make sure you stay
on the route!

ROUTE MAP



Starting Point at UNIS, Toy HO, HN

Distance: 8km

- UNIS Road
- Vo Chi Cong
- Xuan Lo
- Nguyen Huong Ten (2 dragons)
- Nhat Chieu
- To Ngoc Vien
- Xuan Dieu
- Au Co
- Nghi Tam
- Yen Phu
- Long Bien Bridge

Distance: 15km

- Ngoc Thu
- Gio Thuong
- Nam Duong
- Crossing Dong Bridge
- Phu Dong
- De Duong
- Giong Temple

1st Rest Stop

Half-way Rest Stop Giong Temple

Distance: 17km

- De Duong
- KOTO Dream School in Phat Tich, Bao Ninh

Phat Tich Pagoda

KOTO Dream School

FINISH

Giong Temple

RMIT - KOTO Dream Ride
RIDE TO MAKE A DIFFERENCE - ARRIVE AT KOTO DREAM SCHOOL

1 LOOK OUT FOR THE INTERSECTIONS!

Each intersection where you need to turn is listed below - with at least a Volunteer present to help direct you, but don't rely on them. Follow the ride notes and route map and be aware of when the next turn is coming up.

2 REST STOPS

The first rest stop is next to the Thanh Am Secondary School on Nam Duong Road, about 4km after Long Bien Bridge. The second rest stop, also the Half Rider 20km mark, will be at Giong Temple. Make sure to look for these stops on the map before you ride!

THE RMIT-KOTO DREAM RIDE

ROUTE NOTES

3 CHALK SYMBOLS

There will be chalk symbols to mark the route. At the intersections, there will be an arrow pointing which way to go. On long stretches without turns there are also a splash of chalk to indicate that you are on the right path.

4 MECHANICAL CONTACTS

If you have any mechanical problems, get lost, or would like to discontinue the ride please call our hotline number:
0972.948.043



ITINERARY



START

From UNIS Gate 1, turn right to UNIS Road to Vo Chi Cong as you leave Ciputra gate

1

VO CHI CONG - NGUYEN HOANG TON

Continue on Vo Chi Cong to the traffic light then turn left to Nguyen Hoang Ton

2

TWO DRAGONS

Proceed from Nguyen Hoang Ton, pass the roundabout then straight to the West Lake's Two Dragons. Turn left to Nhat Chieu Street.

3

NHAT CHIEU

Ride along Nhat Chieu, enjoy the view of the West Lake, turn right to Sen Ho Tay Street.

4

TO NGOC VAN - XUAN DIEU

At the end of Sen Ho Tay, keep right to To Ngoc Van. Ride to the end of To Ngoc Van then turn right to Xuan Dieu

5

XUAN DIEU - AU CO

Proceed on Xuan Dieu then turn right to Au Co. Keep riding straight ahead to Nghi Tam, Yen Phu to Long Bien bridge.

6

ITINERARY

LONG BIEN BRIDGE

At the end of Yen Phu, near the Long Bien bus stop, keep left onto Long Bien bridge

7

LONG BIEN BRIDGE - NGOC THUY

After exiting Long Bien bridge, keep right to Ngoc Thuy road

8

FIRST REST STOP

Keep riding on Ngoc Thuy then to Nam Duong road. Proceed another 3.5km, you will see 1 KOTO trainee guiding you to the first rest stop next to Thanh Am Secondary School.

9

DUONG BRIDGE

Keep straight and turn right onto Duong Bridge. After Duong Bridge, turn right to Phu Dong road, then proceed on De Duong road for another 6km.

10

GIONG TEMPLE - HALF RIDE STOP

You've reach your half-ride destination!
Take a break and refresh yourself while waiting for our bus and truck to take you to the KOTO Dream School

11

KOTO DREAM SCHOOL

For full riders, please keep riding along the river embankment to KOTO Dream School in Phat Tich, Bac Ninh. Don't worry, from then on just keep straight with 1 final turn to the Dream School, and our trainees will show you along the way!

12



EMERGENCY CONTACTS

We got you!!!

If you think you are lost, retrace your steps to the route map or the main road as you can see in the ride notes, and then try again. If you can't figure out your way back then call our hotline.

Make sure you are always carrying enough water, and drink lots of it. The support vehicles will have water, and you can refill your bottles at the rest stops. The roads might have many turns and intersections – always continue to follow the most obvious and used looking road unless directed otherwise by the ride notes or by the Volunteers.

An ambulance will be following you along the way with experienced doctor and nurses to support you immediately in case of any health related incidents.

01. DREAM RIDE CONTACTS

KOTO:

Ms Tâm: 0972.948.043

Ms Trang: 0932. 531.186

02. MECHANICAL TEAM

Mr Hưng: 0914.686.184

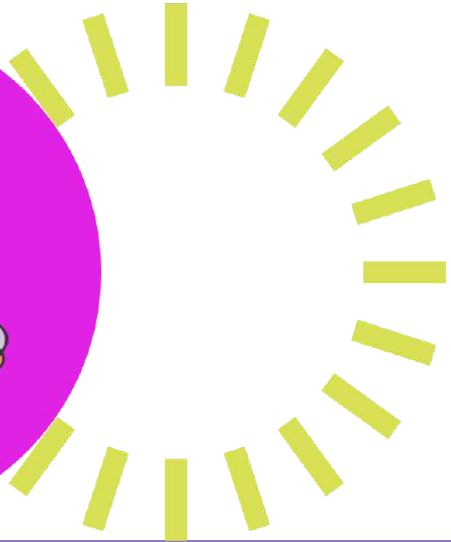
Mr Lâm: 0912.831.186

03. MEDICAL TEAM

Raffles Medical:

Ms Yuki: 0906.275.445





THANK YOU

A special thanks to all our partners and sponsors who help make our amazing ride happen!

